



aconex

BIM-MEP^{AUS}

Aconex & BIM

July 2013

Today's Session...



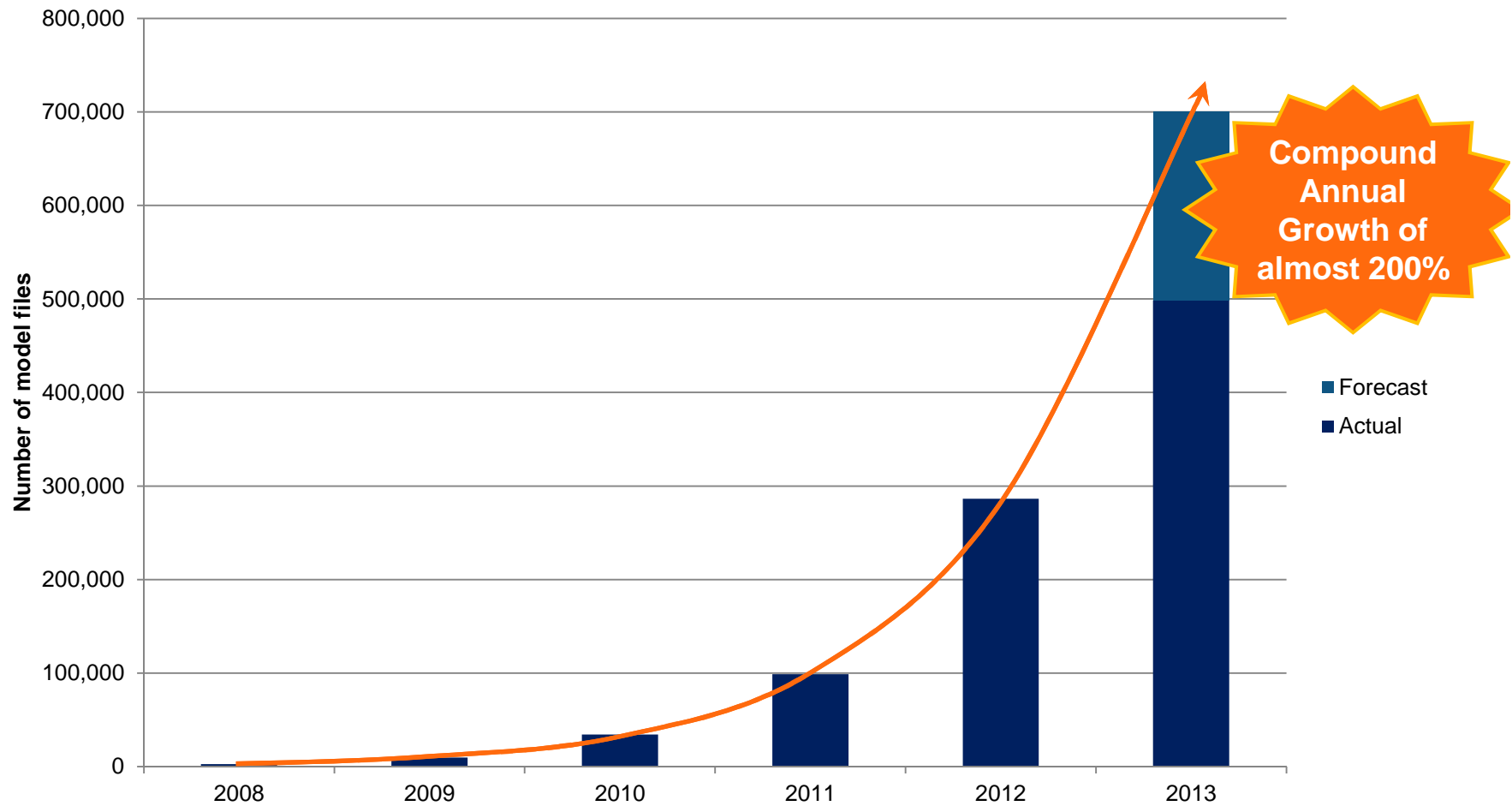
- What is BIM?
- **Industry trends**
- **What do we do for projects now?**
- **What is coming up?**

**Industry
trends...**

Explosion of BIM...



Number of models stored on Aconex*



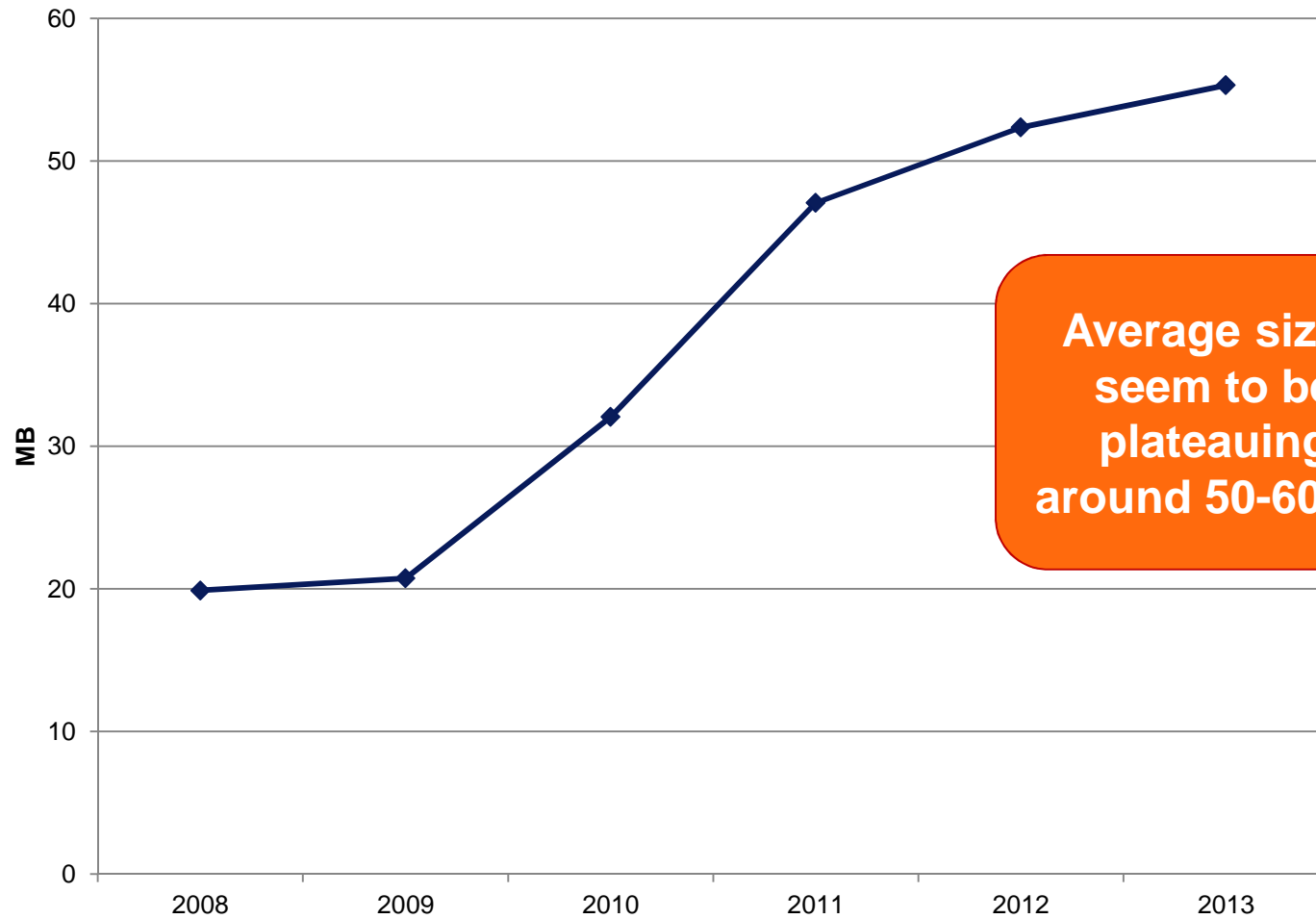
Source: Aconex project data to 24 June 2013

* Excludes DWG 3D and DGN 3D and their derivatives

Average model sizes are plateauing...



Average size of models stored on Aconex*



Source: Aconex project data to 24 June 213
* Excludes DWG 3D and DGN 3D and their derivatives

While max sizes are exploding...



Top 25 models stored on Aconex by size

Location	Year	Type	Size in MB
UAE	2009	DWG	1,921
UAE	2013	NWD	1,165
UAE	2013	NWD	1,165
Saudi Arabia	2012	RVT	1,066
Saudi Arabia	2012	RVT	1,066
Saudi Arabia	2013	RVT	1,066
Saudi Arabia	2013	RVT	1,066
UAE	2013	NWD	1,060
UAE	2013	NWD	1,050
UAE	2013	NWD	1,017
UAE	2012	3DM	924
Australia	2011	MAX	895
Australia	2013	RVT	876
Australia	2012	IFC	869
Australia	2012	IFC	869
Australia	2012	IFC	869
Australia	2012	RVT	862
UAE	2011	3DM	832
Australia	2012	IFC	810
Australia	2012	IFC	803
Hong Kong	2013	RVT	798
North America	2011	DWG	772
North America	2011	DWG	772
North America	2011	DWG	772
Australia	2013	RVT	766

The largest single model is a DWG (!)

96% of this list is from the past 2 years

Source: Aconex project data to 24 June 213

BIM is no longer “for the few”



of live Aconex projects that have models...

33% → 51%

In last 12 months

Source: Aconex project data to 24 June 2013
* Excludes DWG 3D and DGN 3D and their derivatives

8 Common BIM Challenges...



BIM files are huge – how do I **distribute** them?

How do I **reduce cycle times** on clash resolution?

How do I keep **point in time archives** of the model?

How do I **link other information** into my model so I have a **complete BIM**?

How do I have an **audit trail** of decisions made?

How do I **view a part of the model without having to download the whole thing**?

How do I access the model **in the field**?

How do I easily get **2D plans** out of my model and **distribute** them?

**People already
use Aconex to...**

How we already help now...



People already use Aconex to...

- 1. Distribute & version 500,000 models**
- 2. Approve / sign off models via workflows**
- 3. View models online using online IFC viewer**
- 4. Manage coordination (RFI's etc) with markups**
- 5. Archive models**
- 6. Manage 2D deliverables from Revit into Aconex using Xrev**

Tools Available Now – BIM Viewer



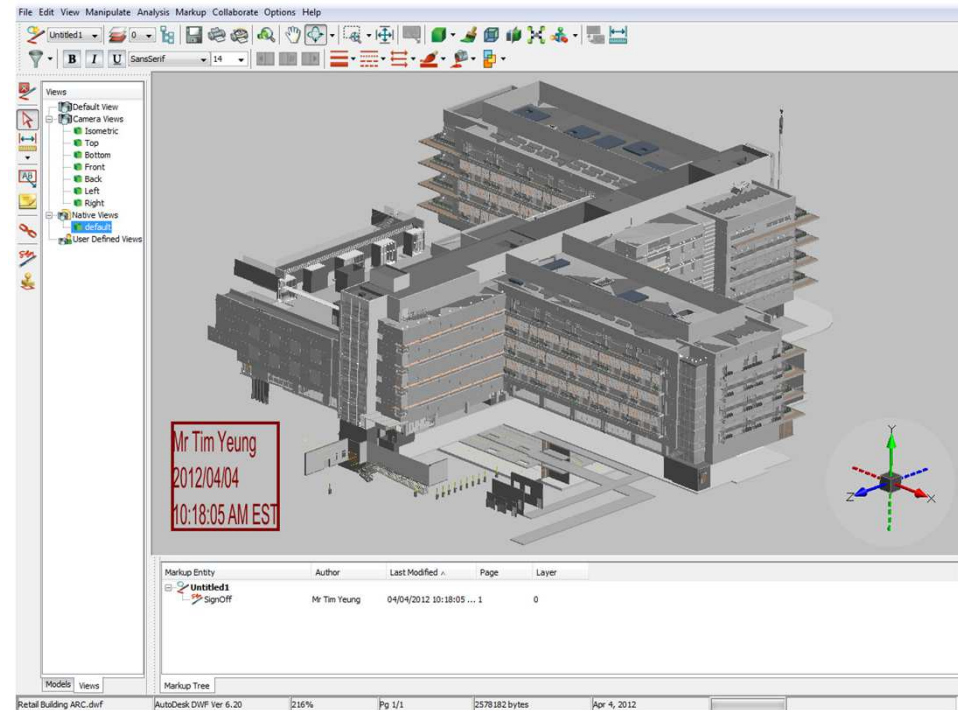
BIM Viewer

What Does it Do?

- Allows all project participants to view and collaborate on models
- Mark-up, save views, etc

What are the Benefits?

- No software required.
- Streams only what is required.
- Real-time model collaboration.
- Resolve project design issues more efficiently.



BIM Viewer Demonstration

Mr Tim Yeung
 2012/04/04
 10:18:05 AM EST

Markup Entry	Author	Last Modified	Page	Layer
Untitled1	Mr Tim Yeung	04/04/2012 10:18:05 ...	1	0
SignOff				

Tools Available Now – Xrev Plugin for Revit



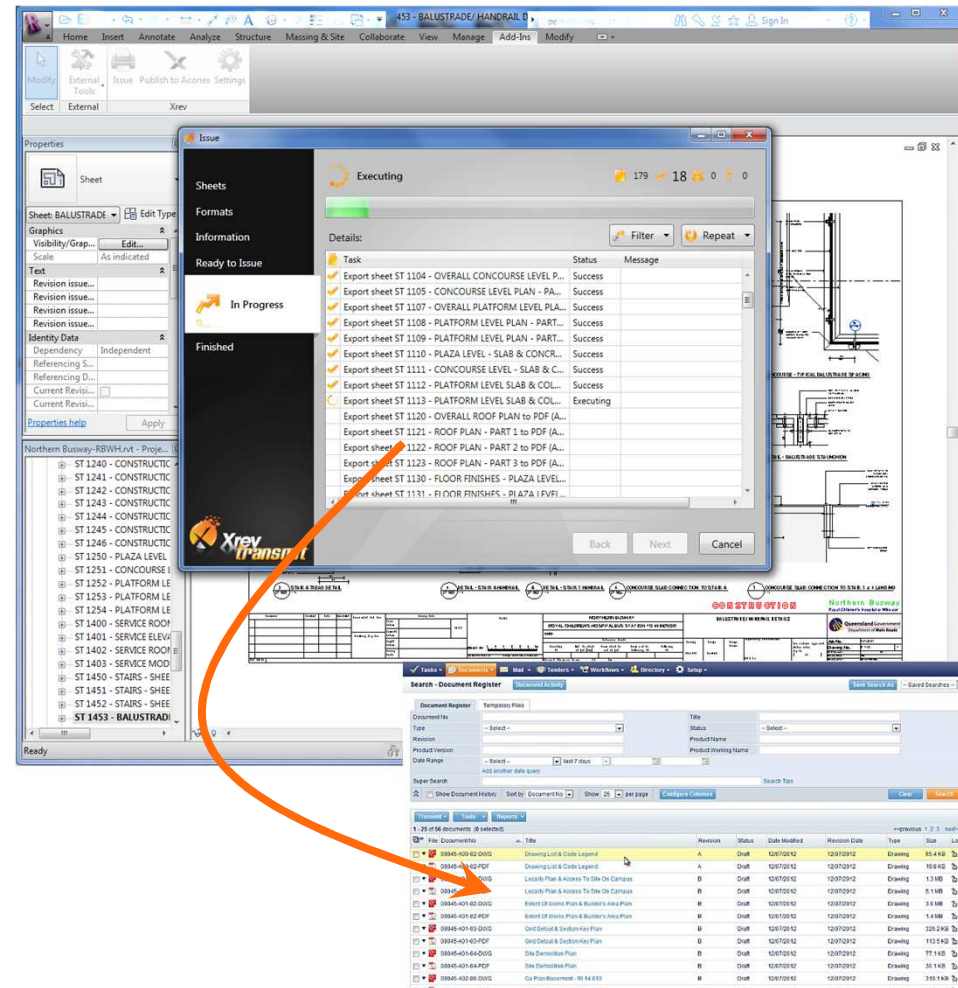
Revit Plug-In

What Does it Do?

- Simplifies the issuing of 2D Revit™ deliverables.

What are the Benefits?

- Publish 2D sheets straight to Aconex, automatically mapping the metadata.
- Eliminates uncontrolled issues and repetitive data entry.



**What is
our future?**

What Aconex Collaborative BIM is about....



BIM has 2 major (disconnected) flows...



X

Imagine if we could
break down the BIM barriers...



X

Why choose?



X

A fully integrated Open BIM platform



Demo...

BIM Server

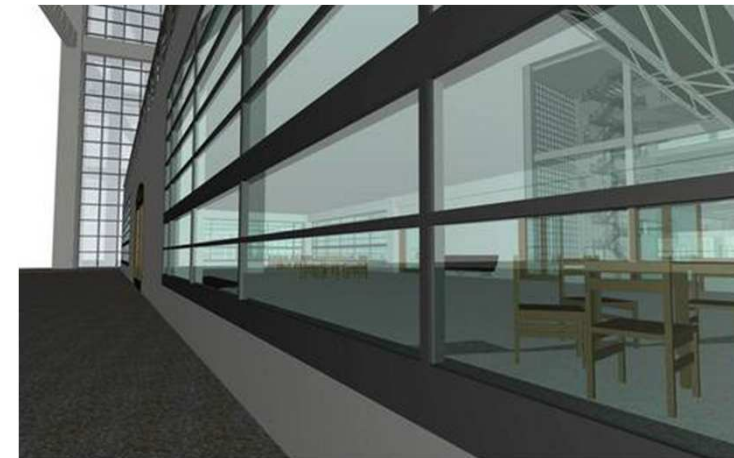
The screenshot displays the Aconex BIM Server interface. At the top, the Aconex logo is on the left, followed by the project name "Hotel VIP Resort" and user information "Majestic Builders | Mr Patrick O'Leary | Logout". Below this is a navigation bar with icons for Tasks, BIM, Documents, Mail, Bids, Workflows, Directory, and Setup. The main content area is divided into a left sidebar and a main panel. The sidebar, titled "Model", contains a list of categories with checkboxes: Merged, Architectural (checked), Structural, HVAC, Electrical, Landscape, Civil, Excavation, and Fire. The main panel, titled "Architectural Model", shows the model's status: "Last modified 2 years ago. Submitted by Patrick O'Leary 5 days ago." Below this, it lists "IFC project name: Vectorworks Project", "Current revision: 46", and "IFC Model: ✓". There is also a field for "IFC project description: -". At the bottom of the main panel, there are buttons for "Activities", "View", "Export", and "Update". The central part of the main panel features a 3D rendering of a multi-story building with a blue roof and green-tinted windows, set on a grey ground plane with a small blue figure and a red-green-blue coordinate system at its base.



BuildingSmart Japan's 2013 Build Live Event

Sept 23 to Oct 18 2014

1. Advancing interoperability
2. Participants contribute models to Aconex cloud BIM Server
3. Judges merge and view models online
4. BuildingSmart Japan has been running Build Live Events since 2009
5. In 2012, Build Live Chiba had over 200 participants



c-3 ハース

Build Live CHIBA 2012

チーム名(スライドマスターに記入)

Thank you